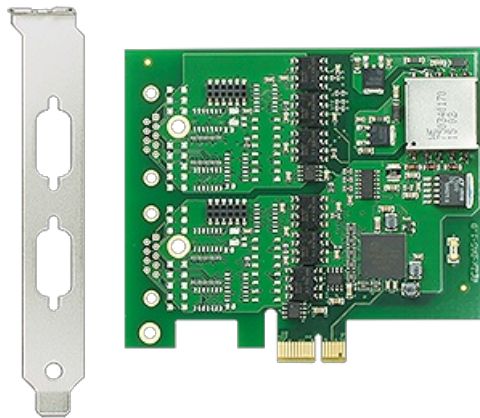


Data sheet:

PCI Express Motherboard, 1kV isolated



Article no.: 13031

EUR 198.00

*Net price for commercial users

Two mixed serial ports on PC

The PCI Express Baseboard 13031 used together with W&T interface modules provides two independent serial ports with galvanic isolation of 1kV.

Properties

Interfaces:

- **2x TTL interface**
- **1x 32-bit PCIe bus**
- **Galvanic isolation between the ports**
 - Isolation voltage 1kV DC
- **Flexible interface selection**
 - by selecting the serial interface modules

Management and connectivity:

- **Two different serial ports on one PCIe card:**
 - R20mA, RS232, RS422, RS485, Profibus
- **UART with 128-byte FIFO and DMA capability for relieving the CPU**
- **Compact "x1" plug-in card for any PCI Express slots**
- **Compatible with PCI Express Standard 1.1 and PCI Power Management Standard 1.2**
- **Driver support for:**
 - [Windows Desktop: NT, 2000, XP, Vista, 7, 8, 10, 11](#)
 - [Windows Server: 2003, 2008, 2008R2, 2012, 2016, 2019, 2022](#)
 - Linux: Ubuntu, Suse, Debian,

Standards & more

- **Conforms to standards both in office and industrial environments:**
 - High noise resistance per EN 61000-6-2
 - Low noise emission per EN 55032:2015 + A1 Cl. B, EN 61000-3-2 & EN 61000-3-3
- **5 year guarantee**



Wish for something!

[Your suggestions for improvement and additions](#)

Worth knowing

PCI Express has almost completely replaced the long-in-the-tooth PCI bus system in current PC designs. There are still PC motherboards which offer slots for both systems, but due to cost and performance considerations current boards are equipped almost exclusively with PCI Express slots.

PCI Express is not a traditional PC bus system in which all plug-in cards are in parallel with the majority of bus lines. PCI Express is rather a star type wiring technique using a point-to-point connection between the PC and plug-in card to allow significantly greater transmission speeds than a bus solution with parallel wired slots would be able to process.

Data transmission to the plug-in cards in PCI Express is serial using differential wire pairs, so-called "lanes", which run at a speed of 2.5 or 5 GB/s. For cards with high data throughput (graphics and network cards, hard drive controllers), multiple lanes are routed to a slot, whereas cards with less complexity get by easily with one lane.

The PCI Express standard enables solutions in which one (x1), four (x4), eight (x8) or 16 (x16) lanes are routed to a slot, with the connectors differing in the mechanical configuration, pin configuration and load capacity of the supply voltage.

The mechanical coding of cards and connectors ensures however that short cards can be easily used in long slots. For example, a x1 card can be used in a x4, x8 or x16 slot.

Technical data

Connections and displays:

PCIe port:	PCIe 1.1 / "x1" connector
Serial port:	2x galvanically isolated slots for interface modules 12-pin header with 2mm spacing
Operating modes:	Different interface types possible
Maximum baud rate:	3 Mbaud
Data format:	any format
Signals:	RxD,TxD,RTS,CTS,DSR,DCD,DTR,RI
UART:	Oxford OXPCle954 with 128 bytes FIFO
Galvanic isolation:	Isolation voltage min. 1kV DC between PC and serial ports
Supply voltage:	3.3V DC, 12V DC
Current consumption:	typ. 200mA @ 3.3V typ. 200mA @ 12V






Housing and other data:

Dimensions:	120 x 120 mm (W x H)
Enclosure rating:	IP00
Weight:	approx. 100g
Ambient temperature:	Storage: -40..+70°C Operating: 0..+70°C
Permissible relative humidity:	5..95% RH, non-condensing
Scope of delivery:	PCIe Card base board slot plate Quick start manual product CD with manual, German/English

Accessories

*Net unit price for
commercial users

Additive modules

RS232/RS422/RS485 interface module, 5V technology	18813	55.00€	
RS232 DTE interface module	18811	41.00€	
20mA interface module (5V and 12V)	18411	55.00€	
RS422/RS485 interface module	18611	55.00€	
Profibus interface module	18612	49.00€	

* Our offering is intended only for commercial users. We will be happy to refer private end customers to trading partners through whom our products can be purchased.



[We are available to you in person:](#)

Wiesemann & Theis GmbH
Porschestra. 12
42279 Wuppertal
Phone: +49 202/2680-110 (Mon.-Fri. 8 a.m. to 5 p.m.)
Fax: +49 202/2680-265
info@wut.de

© Wiesemann & Theis GmbH, subject to mistakes and changes: Since we can make mistakes, none of our statements should be applied without verification. Please let us know of any errors or misunderstandings you find so that we can become aware of and eliminate them.

[Data Privacy](#)