

Data sheet:

## IP-Watcher 2x2 Digital I/O



Article no.: 57655

The IP Watcher 2x2 Digital I/O has been replaced by the function-compatible IP Watcher 2xIn, 2xOut #57955.

### The IP-Watcher generates an alarm when network components no longer respond.

Devices are watched by cyclically pinging or regular opening and closing of a selectable TCP port. In case of a fault, switch on an alarm or report via the network, e.g. e-mail or SNMP trap. In addition, the IP-Watcher offers an SNTP service which can be used to obtain the current time information for any network clients.

### Properties

#### Interfaces:

- **Network connection**
  - 10/100BaseT autosensing, RJ45
- **2 digital outputs in 6V-30V industry standard for local alarm issuing**
  - Current sourcing FET
  - Short-circuit-protected by virtue of thermal safety fuse
- **2 digital inputs in industry standard usable as acknowledgment input**
  - Type 1, current sinking in accordance with IEC 1131-2
  - Protected against polarity reversal
- **Galvanic isolation between the ports**
  - Isolation voltage 1kV

#### Management and connectivity:

- **Web-based management**
  - Configuration of the system parameters
  - Self-refreshing view of the alarm, input and output states
  - Acknowledge pending alarms from the browser
  - Definition of alarm conditions
- **4 freely configurable alarms**
  - Triggers when configured IP addresses or host names cannot be reached
  - Monitoring of up to 250 IP addresses possible
  - Alarm options: E-mail, SNMP trap, UDP and TCP client, Syslog messages, FTP
  - Optional acknowledgment via digital input or using the Web interface
- **SNTP time server**
  - Current time information is passed using SNTP (Simple Network Time Protocol)
  - Service provider for any requesting network station
- **Online Web interface language selection**
  - Deutsch
  - English

#### Power supply:

- **PoE (Power over Ethernet)**
  - Phantom power using data pairs
  - Power provided by unused wire pairs (spare-pair power)
- **Using external power supply**

- Supply from external power supply possible as an alternative to PoE

## Standards & more

- **Conforms to standards both in office and industrial environments:**
  - High noise resistance per EN 61000-6-2
  - Low noise emission per EN 55032:2015 + A1 Cl. B, EN 61000-3-2 & EN 61000-3-3
- **5 year guarantee**

♥ Wish for something!  
Your suggestions for improvement and additions

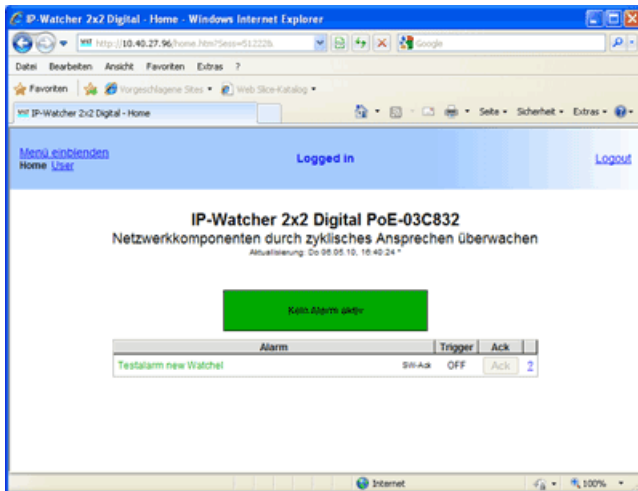
## Example applications

### Small System

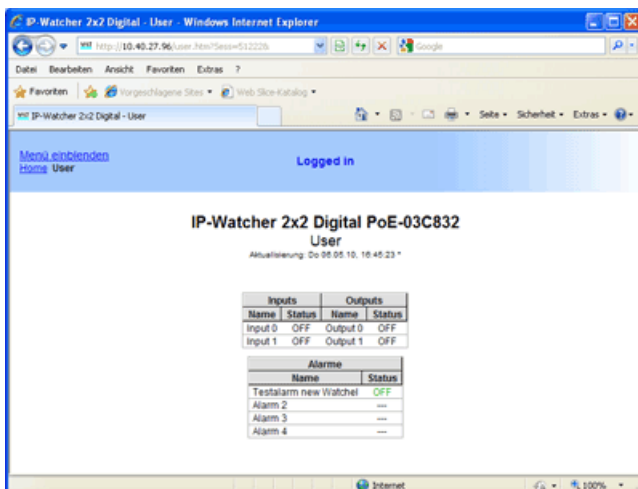
Using the integrated Web server the IP-Watcher can be configured directly through the browser. It is also possible to monitor the configured alarms and acknowledge pending messages using the Web interface. Additional functions, such as sending email messages, enables implementation of autonomous applications out-of-the-box.

### Big System

Standard protocols and interfaces such as OPC, SNMP and SYSLOG enable trouble-free integration into existing systems (e.g. monitoring via SNMP with [Nagios](#)). The digital outputs can be used to report faults even on already present automation devices having digital inputs.



Monitor the status of the configured alarms directly from the browser. Alarm acknowledgments can be performed directly on the Web interface by mouse-click. The display is self-refreshing and therefore always current.



Additional overview of the status of the in- and outputs, as well as of the set alarms.

## Technical data

Connections and displays:

Network: 10/100BaseT autosensing, RJ45  
IPv6 on request

Adapters: 2x screw terminal for power (alternative to POE)  
6-point screw terminal for IOs

Digital outputs: 2 x Digital Out 6V ... 30V, 500mA  
Short-circuit-protected

Digital inputs: 2 x Digital In  
max. input voltage +/-30V  
protected against reverse connection within this range  
Switching threshold 8V +/- 1V  
"On" current = 2.2 mA

Alarms: 4 alarms for local and/or remote messaging

Response times: Data and switching traffic: typically 12 ms

Galvanic isolation: Digital-IO's - network: min. 1kV

Power supply: Power-over-Ethernet (PoE) or via screw terminal with  
DC 24V ... 48V (+/-10%) or AC 18Veff ... 30Veff (+/-10%)

Displays: 1 LED for network connection status  
1 LED for current IO status  
1 LED for device status

#### Housing and other data:

Housing: Plastic housing for DIN rail mount  
105 x 75 x 22mm (L x W x H)

Enclosure rating: IP20

Weight: approx. 140g

Ambient temperature: Storage: -40..+70°C  
Operation: 0..+60°C

Scope of delivery: IP-Watcher 2x2 Digital I/O incl. alarm management software  
Quick start manual  
W&T Product CD



#### We are available to you in person:

Wiesemann & Theis GmbH  
Porschestra. 12  
42279 Wuppertal  
Phone: +49 202/2680-110 (Mon.-Fri. 8 a.m. to 5 p.m.)  
Fax: +49 202/2680-265  
info@wut.de

© Wiesemann & Theis GmbH, subject to mistakes and changes: Since we can make mistakes, none of our statements should be applied without verification. Please let us know of any errors or misunderstandings you find so that we can become aware of and eliminate them.

[Data Privacy](#)