

Data sheet:

Web-Thermograph NTC



Article no.: 57614

This article has been replaced by the expanded successor model [Web Thermometer NTC](#).

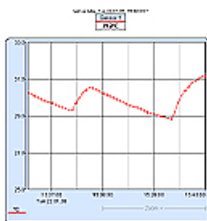
Monitor and graphically display temperatures

Example application: <http://klima.wut.de>

Properties

General information

- **Supply voltage via Power-over-Ethernet (PoE)**
 - Phantom power using data pairs
 - Power over unused wire pairs
 - Alternate external supply possible
- **NEW! Encrypted e-mail sending via SSL/TLS**
- **NEW! Device language selectable German/English**



- Freely selectable line color
- Freely selectable display size
- Extreme value or current value display
- Various scales displayed
- Automatic or manual scaling
- **Monitor temperatures and curves with your browser**
 - HTML page design user-variable
 - Direct access to current temperature value, e.g., for integration into other Web pages
- **SNMP temperature polling /Alarm traps** for incorporating into your existing SNMP management system
- **A new measurement is available every 4 seconds!**
- **E-mail for alarm or reporting functions**
- **Adapters:**
 - 10/100MBit
 - NTC temperature probe
- **Easy Start:**
 - Connect sensor and network cable
 - Connect supply voltage
 - Assign IP number
 - That's it!
- **Application examples:**

- Monitor temperatures in the server room, network cabinet or office
- Direct display of multiple measuring points in the browser via Java applet
- Send alarms when limits are exceeded via e-mail, SNMP trap, TCP client, Syslog
- Logging of the measured values via FTP, Excel file, e-mail attachment, internal memory
- **Software interfaces**
 - HTTP, Web browser
 - AJAX, JavaScript and Java applet
 - TCP and UDP sockets, client and server
 - OPC server
 - SMTP (e-mail)
 - SNMP (including trap)
 - SYSLOG
 - FTP (data logging)
- **Green IT:** Monitor efficiency of the server room climate control
- **Conforms to standards both in office and industrial environments:**
 - High noise resistance per EN 61000-6-2
 - Low noise emission per EN 55032:2015 + A1 Cl. B, EN 61000-3-2 & EN 61000-3-3
- **5 year guarantee**

Background information:

Like all the Web-IO Climate series models, the Web-Thermograph NTC 57614 offers everything you need for connecting a temperature sensor to the computer network. In addition, the power can be provided per IEEE 802.3af (**Power-over-Ethernet**) over the network cable, with both phantom power over the data pairs as well as power using the wire pairs not used for 10/100BT. Problems with outlets, country-specific plug types, various AC voltages etc. are now a thing of the past.

For cases in which PoE is planned but not yet fully implemented, it is also possible to provide power using an external power supply and screw terminals.

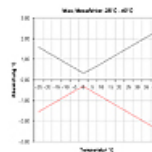
Technical data

Temperature sensor: NTC connection
 Network: 10/100BaseT autosensing
 IPv6 on request
 Supply voltage: Power-over-Ethernet (PoE) or via screw terminal with
 DC 18V .. 48V (+/-10%) or AC 18Veff .. 30Veff (+/-10%)

Measuring unit

Sensor: NTC 10k
 Measuring range: -45°C...75°C
 Resolution: 1/10°C

Maximum measuring error: $\pm 0.3^{\circ}\text{C}$, $\pm 5.1\%$
 (measuring unit + sensor)



Storage frequency: 1, 5, 15, 60 min
 Memory depth (832k): min. 14 weeks, max. 16 years
 Deviation of the internal clock: max. 4.32 min. / month

Other data

Measuring frequency: 4 seconds
 Electrical isolation: Signal inputs to network: min. 500 volts
 E-mail function: Mail for sending alarms or as reporting function
 Power supply: Power-over-Ethernet (PoE) or via screw terminal with
 DC 18V .. 48V (+/-10%) or AC 18Veff .. 30Veff (+/-10%)
 Current consumption: AVG: 80mA @24VDC, 100mA @20VAC
 Max: 90mA @24VDC, 50mA @48VDC
 PoE Class 1 (0.44 - 3.84W)
 Emergency access: RS232 serial port, 9600 baud, 8 data bits, 1 stop bit, no parity
 Housing: Plastic compact housing, 105x75x22mm
 Weight: approx. 200g

Ambient storage temperature: -40..+70°C
Ambient operating temperature: 0 .. +60°C
Scope of delivery: 1x Web-Thermograph NTC for top-hat rail mount
1x NTC temperature probe



[We are available to you in person:](#)

Wiesemann & Theis GmbH
Porschestra. 12
42279 Wuppertal
Phone: +49 202/2680-110 (Mon.-Fri. 8 a.m. to 5 p.m.)
Fax: +49 202/2680-265
info@wut.de

© Wiesemann & Theis GmbH, subject to mistakes and changes: Since we can make mistakes, none of our statements should be applied without verification. Please let us know of any errors or misunderstandings you find so that we can become aware of and eliminate them.

[Data Privacy](#)